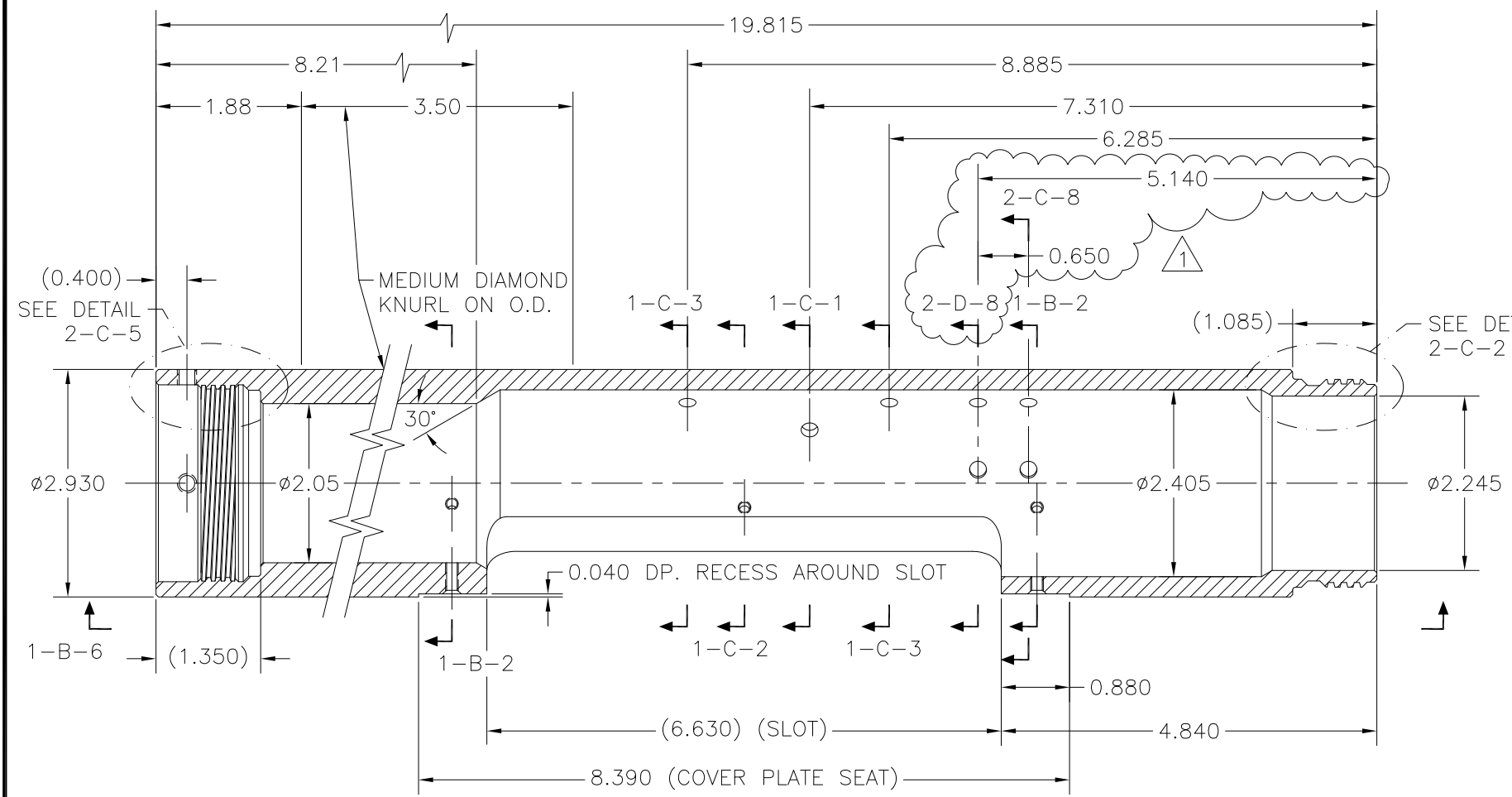


NOTES:

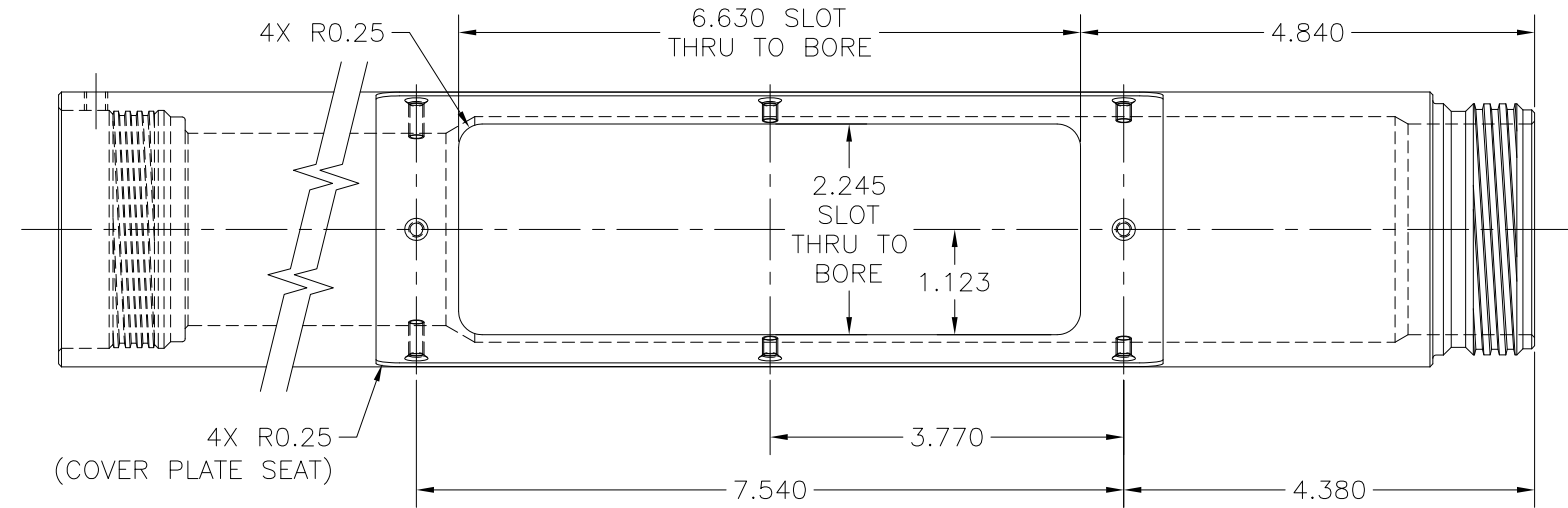
1. MATERIAL: BAR, 17-4PH/15-5PH,  $\phi 2.930 \times 19.815$  LG.
2. HEAT TREAT: COMMERCIAL HT.
3. SURFACE TREATMENT: XYLAN COAT (THREADS ONLY) OR EQ.
4. FABRICATOR TO MAKE C'SINK DEPTH SO THAT A HEX SOCKET, 82° FLAT HEAD, #10-24UNC-2A SCREW IS JUST BELOW FLUSH WITH O.D. OF MOTOR HOUSING SUB ( $\phi 2.930$ ) WHEN TIGHT.

5. FABRICATOR TO DETERMINE C'SINK DEPTH WHEN FITTING COVER PLATE, REF. DWG. ERS-008. A HEX SOCKET, 100° FLAT HEAD, #8-32UNC-2A SCREW SHOULD BE JUST BELOW FLUSH WITH O.D. OF COVER PLATE ( $\phi 2.930$ ) WHEN TIGHT.
6. THREAD TRUNCATION TAPERED SMOOTHLY AT BOTH ENDS.
7. WEIGHT: 12.86 LBS.

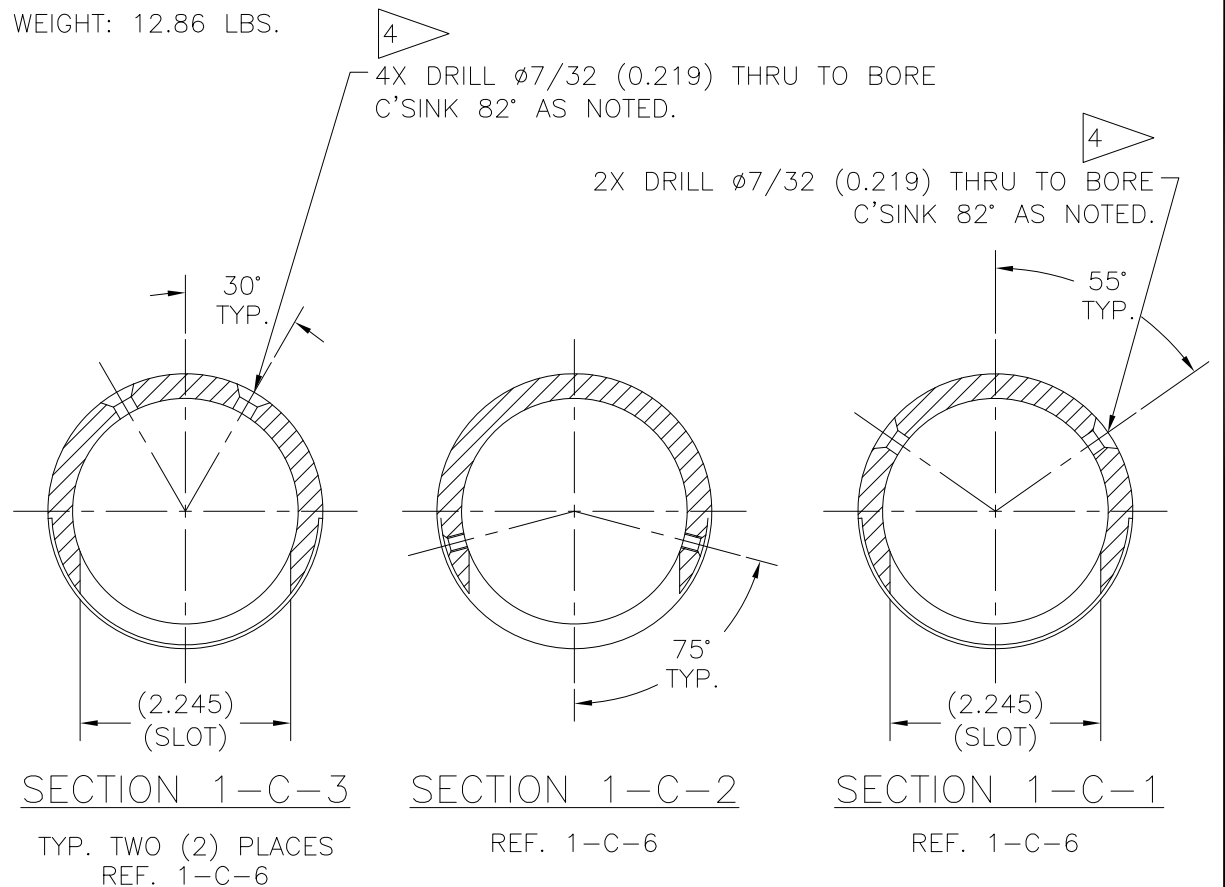
REVISIONS				
NO	DESCRIPTION	DATE	BY	APR/DATE
0	ISSUED FOR MANUFACTURE	05/12/10		
1	ADDED HOLES FOR BEARING HOLDER SCREWS	2/21/11		



SECTION 1-C-6  
MOTOR HOUSING SUB



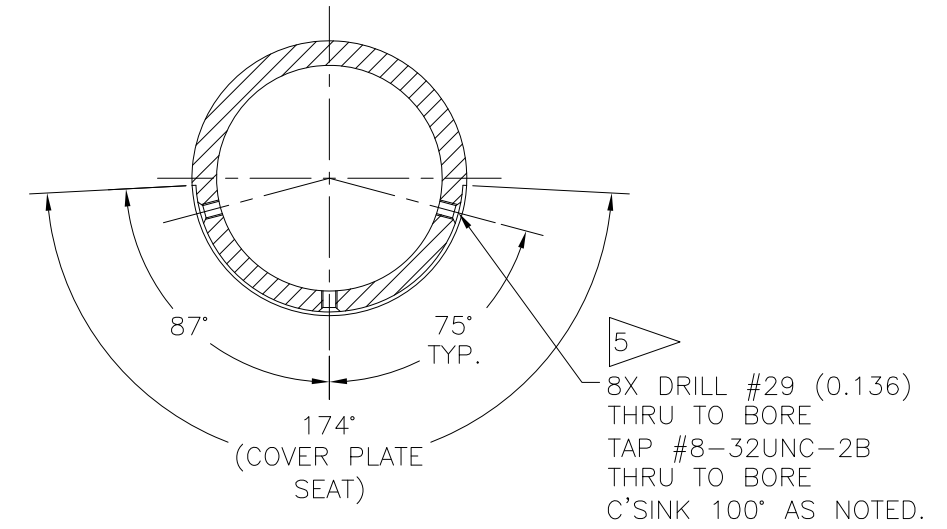
BOTTOM VIEW 1-B-6  
REF. 1-C-8



SECTION 1-C-3  
TYP. TWO (2) PLACES  
REF. 1-C-6

SECTION 1-C-2  
REF. 1-C-6

SECTION 1-C-1  
REF. 1-C-6



SECTION 1-B-2  
TYP. TWO (2) PLACES  
REF. 1-C-7 & 1-C-5

TOLERANCES: UNLESS OTHERWISE SPECIFIED 0.X ± 0.030 0.XX ± 0.010 0.XXX ± 0.005 ANGLES ± 1/2° BREAK EDGES 0.015 x 45° MIN. FINISH 125 ✓ [0.010]A ALL DIMS ARE IN INCHES, UNLESS NOTED OTHERWISE.	PROPRIETARY NOTICE THIS DRAWING AND THE INFORMATION IT CONTAINS ARE CONSIDERED CONFIDENTIAL, AND MAY NOT BE REPRODUCED, COPIED OR USED, IN PART OR IN WHOLE, WITHOUT PRIOR WRITTEN CONSENT.	<b>Integrated Ocean Drilling Program</b> TEXAS A&M UNIVERSITY 1000 DISCOVERY DRIVE COLLEGE STATION, TX 77845	
		SHEET 1 OF 2 SCALE FULL BY KM DATE 03/30/10	TITLE MOTOR HOUSING SUB SYSTEM ERS v.2 APPROVED TP CHECKED JCS SIZE D P/N ERS-007 REV. 1